

**Pre-Shipment Inspection (PSI)**

**N-xxx-xxxxxx.x**

**GENERAL INFORMATION**

Client	XXXXXX
Product	Boy's tee shirt & short set
Item/Style	XXXXXX
Inspection location	Ningbo, Zhejiang
Inspection date	Jan.05, 2022
Shipment date	XXXX
PO number	XXXX
Supplier	XXXX
Order quantity	14,004 Pcs
Available quantity	14,004 Pcs (100%)
Ref Sample	No



**OVERALL CONCLUSION**

**Passed**     **Pending**     **Failed**

**INSPECTION RESULT SUMMARY**

	Result	Findings/Remarks			
Workmanship	<b>Within AQL</b>	AQL 0/2.5/4.0	CRI	MAJ	MIN
		Found	0	XX	XX
		Max	0	14	21
		Sample Size	315	315	315
Quantity	<b>OK</b>	/			
Style & Colors	<b>OK</b>	/			
Artworks & Labels	<b>OK</b>	/			
Dimensions & Weights	<b>Within AQL</b>	AQL 2.5	MAJ		
		Found	18		
		Max	21		
		Sample Size	To measure 2 pcs each color and size		
Shipping marks/Packing & Packaging	<b>OK</b>	/			
Tests	<b>Not OK</b>	Remark 1			
Client's Requirements	<b>N/A</b>	/			

**IMPORTANT REMARKS**

- XX
- XX
- XX

Pictures	Pictures
Remark 1	Remark 2
/	/
Remark 3	Remark 3

**INSPECTION STANDARDS & DATAS**

Sampling standard	ANSI/MIL STD-105E/ASQC Z.1.4
Sampling level for Workmanship	II
Number of Man-day spent:	1
Inspector name	XXXX

**1. QUANTITY**

Expected	<b>100%</b> of order quantity must be finished and packed.	Actual finding	Finished	100%
			Packed	100%

**Inspector comments:** N/A

PO#	Style # / Color	Order Qty (Units)	Available Quantity				Units/Carton
			Packed		Finished but not packed (Units)	Not finished (Units)	
			Units	Cartons			
XXXX	XXXXXXXXXX-BABY BLUE	3501	3501	389	0	0	Carton weight(Kgs)
	XXXXXXXXXX-BLACK	3501	3501		0	0	10.33
	XXXXXXXXXX-GREY	3501	3501		0	0	Carton size (Cm)
	XXXXXXXXXX-NAVY	3501	3501		0	0	51.5x26x35.5
<b>TOTAL</b>			14004	389	0	0	

款号: 25210513001 男童  
 上衣: 60/40CVC汗布 裤子全涤汗布  
 出货日期: 2022-1-5 PO: 9452

墨西哥裤子, 平装小折叠, 内放干燥剂, 外面有条码贴纸  
 混色 混码包装, 配比包装42件/箱

箱号		箱数	色别	每箱尺寸搭配				每箱	合计	
CTNNO		CTNS	COL	SIZE ASSORTMENT				件数	件数	
				5/6	7/8	110/12	14/16		TTL	
1		389	389	blue 天兰组	1	3	3	2	9	3501
				NAVY 藏青组	1	3	3	2	9	3501
				GREY 草绿组	1	3	3	2	9	3501
				BLACK/NEGRO 黑色组	1	3	3	2	9	3501
										14004

总数  
 总数  
 总数

Packing list



Finished products



Finished products



After sampling



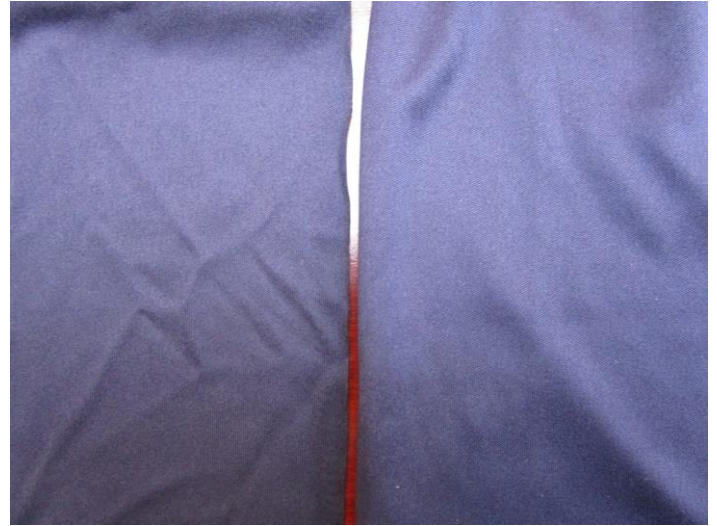
After sampling



**2. STYLE AND COLORS**

Expected	Conformity compared to client's approved sample and specifications.	Actual finding	<input checked="" type="checkbox"/> <b>OK</b>	<input type="checkbox"/> <b>Not OK</b>	<input type="checkbox"/> <b>Pending</b>
----------	---	----------------	---	--	---

**Inspector comments:** N/A



Compared with approved swatches

Result: **OK**



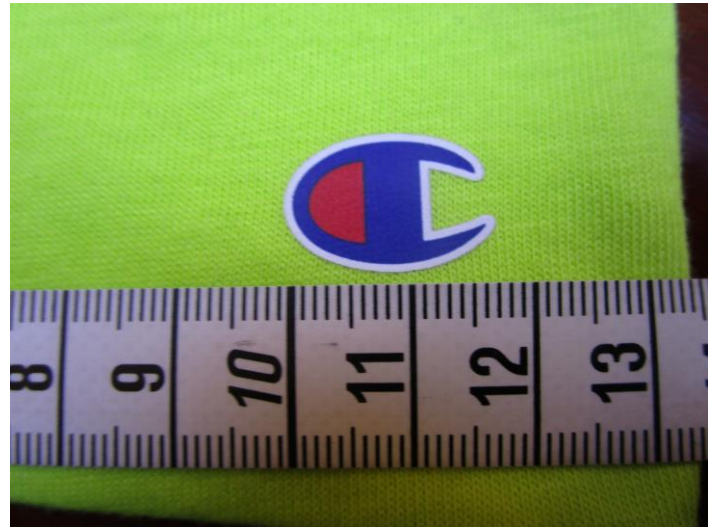
Product details

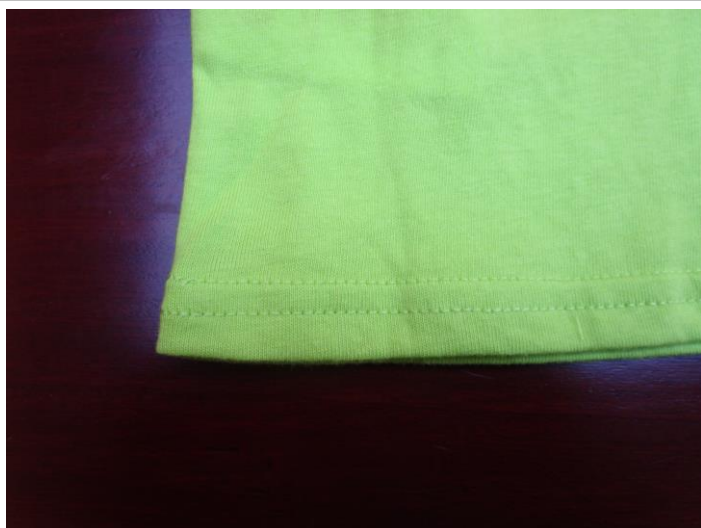
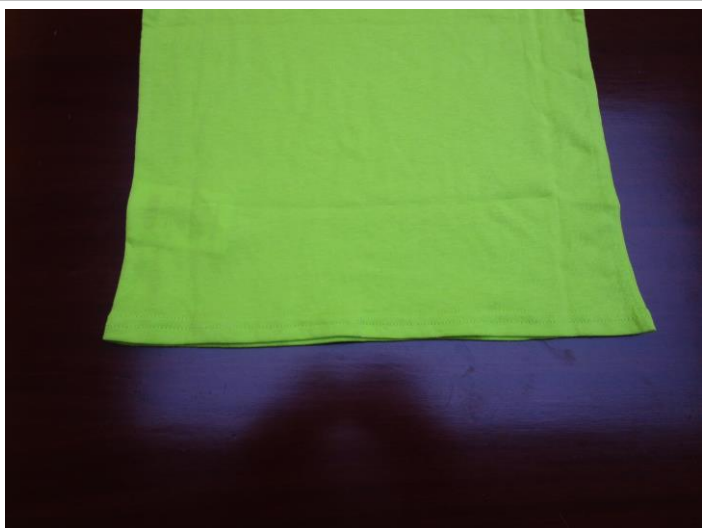
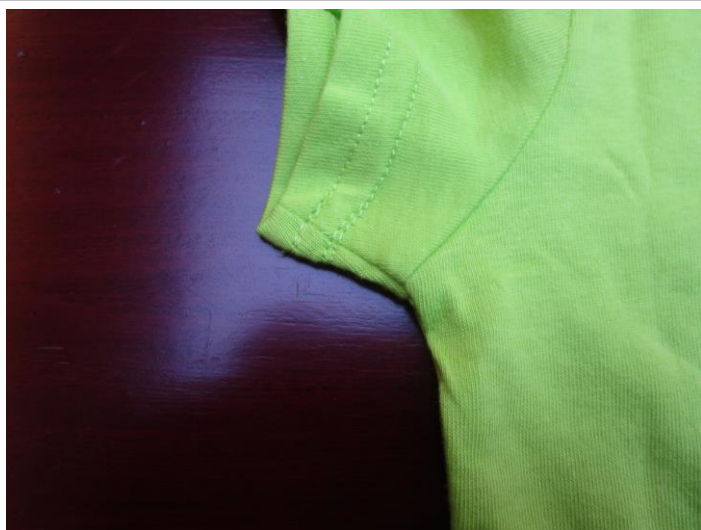
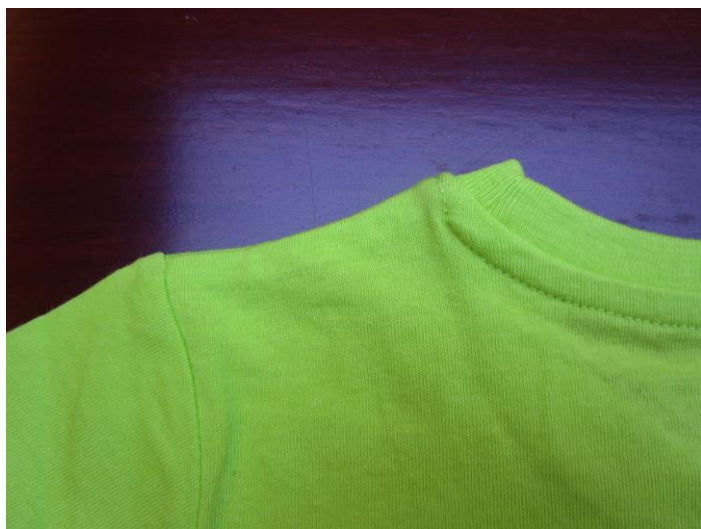


Product details





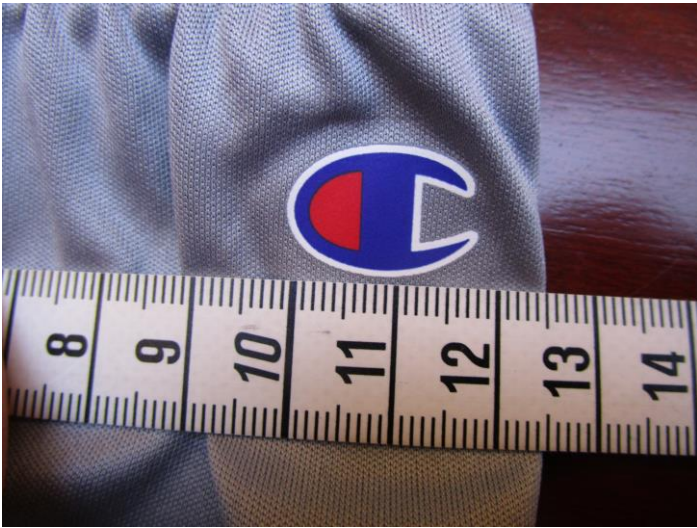




















**3. ARTWORKS AND LABELS**

Expected	Conformity compared to client's specifications.	Actual finding	<input checked="" type="checkbox"/> <b>OK</b>	<input type="checkbox"/> <b>Not OK</b>	<input type="checkbox"/> <b>Pending</b>
----------	---	----------------	---	--	---

**Inspector comments:** N/A





Label location



Label location



Care label seam view

Care label seam view



Care label seam view

Care label seam view

Care label seam view

Care label seam view

Care label seam view

Care label seam view





For all color different size

/



For all color different size	/
BABY BLUE 5/6	BABY BLUE 5/6
BABY BLUE 7/8	BABY BLUE 7/8
BABY BLUE 10/12	BABY BLUE 10/12
BABY BLUE 14/16	BABY BLUE 14/16
BLACK 5/6	BLACK 5/6
BLACK 7/8	BLACK 7/8
BLACK 10/12	BLACK 10/12
BLACK 14/16	BLACK 14/16
GREY 5/6	GREY 5/6
GREY 7/8	GREY 7/8
GREY 10/12	GREY 10/12
GREY 14/16	GREY 14/16
NAVY 5/6	NAVY 5/6
NAVY 7/8	NAVY 7/8
NAVY 10/12	NAVY 10/12
NAVY 14/16	NAVY 14/16

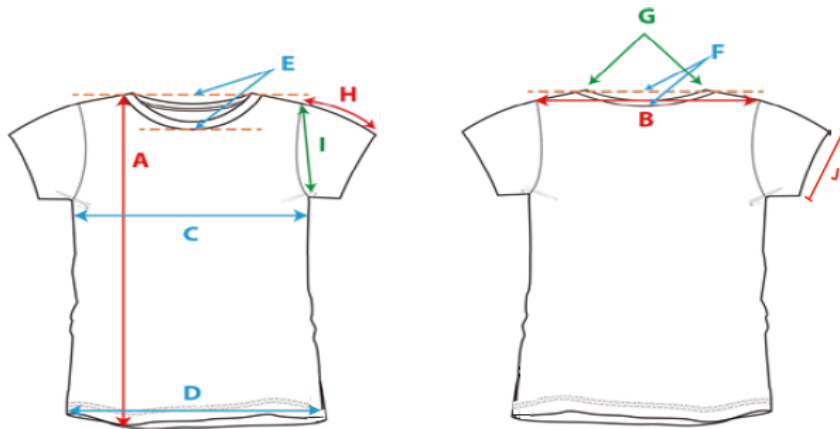
**4. PRODUCT DIMENSIONS AND WEIGHT**

Expected	According to client's approved sample, measurement table.	Actual finding	<input checked="" type="checkbox"/> <b>OK</b>	<input type="checkbox"/> <b>Not OK</b>	<input type="checkbox"/> <b>Pending</b>
----------	---	----------------	---	--	---

**Inspector comments:** /

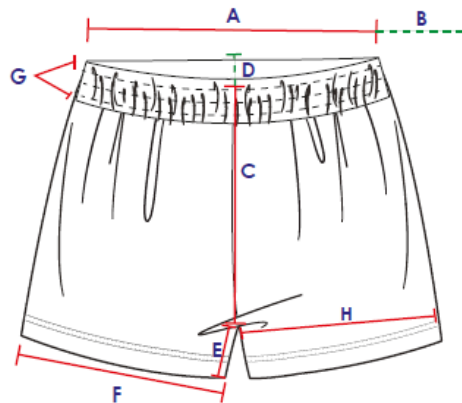


	MEASUREMENTS ON FINISHED GARMENT	5/6	7/8	10/12	14/16	TOL. +/-
A	LENGHT FROM HPS TO BOTTOM	18 1/4"	19 1/4"	20 1/4"	21 1/4"	1/4"
B	CROSS SHOULDERS	11"	11 3/4"	12 1/2"	13 1/4"	1/2"
C	CROSS CHEST 1" DOWN FROM AH	13 1/8"	13 7/8"	14 5/8"	15 1/2"	1/4"
D	BOTTOM WIDTH	13 1/4"	14"	14 3/4"	15 1/2"	1/4"
E	FRONT NECK DROP (HPS TO SEAM)	2 7/8"	3"	3 1/8"	3 3/8"	1/4"
F	BACK NECK DROP (HPS TO SEAM)	3/4"	3/4"	3/4"	3/4"	NA"
G	NECK WIDTH SEAM TO SEAM (W/O COLLAR)	5 3/4"	6"	6 1/4"	6 1/2"	1/8"
H	SLEEVE LENGHT FRM SHOULDER	4 7/8"	5 1/4"	5 5/8"	6"	1/8"
I	STRAIGHT ARMHOLE	5 3/4"	6"	6 1/4"	6 1/2"	1/8"
J	SLEEVE OPENING	5"	5 1/4"	5 1/2"	5 3/4"	1/8"



	MEASUREMENTS ON FINISHED GARMENT	5/6	7/8	10/12	14/16	TOL. +/-
A	RELAXED 1/2 WAIST	10 1/2"	11"	11 1/2"	12"	1/4"
B	STRETCHED 1/2 WAIST	14 1/2"	15"	15 1/2"	16"	1/4"
C	FRONT RISE WAISTBAND INCLUDED	9 3/4"	10 1/8"	10 1/2"	10 7/8"	1/8"
D	BACK RISE WAISTBAND INCLUDED	12"	12 3/8"	12 3/4"	13 1/8"	1/8"
E	INSEAM TO CROTCH	5"	6"	7"	8"	NA
F	LEG OPENING	9"	9 1/2"	10"	10 1/2"	1/4"
G	WAISTBAND HEIGHT	1 1/2"	1 1/2"	1 1/2"	1 1/2"	NA
H	UPPER THIGH WIDTH	9 1/2"	10"	10 1/2"	11"	1/4"

VERIFY MEASUREMENTS  
VERSUS OS



VERIFY MEASUREMENTS  
VERSUS OS

**Actual Finding**

* MEASUREMENTS ON FINISHED GARMENT*		5/6				TOL +/-
TEE SHIRT						
	COLOR	BLUE	BLACK	GREY	NAVY	
A	LENGTH FROM HPS TO BOTTOM	/	1/4	1/8	1/8	1/4
		3/8	-1/8	-1/8	1/4	
B	CROSS SHOULDERS	1/4	1/4	1/4	3/8	1/2
		1/4	1/4	3/8	1/8	
C	CROSS CHEST 1" DOWN FORM AH	1/8	1/4	3/8	-1/8	1/4
		/	1/8	1/8	/	
D	BOTTOM WIDTH	1/4	/	1/8	1/8	1/4
		/	1/8	1/8	1/4	
E	FRONT NECK DROP (HPS TO SEAM)	1/8	/	/	/	1/4
		/	1/8	1/8	1/8	
F	FBACK NECK DROP (HPS TO SEAM)	1/4	1/4	1/4	1/4	N/A
		3/8	1/4	1/4	1/4	
G	NECK WIDTH SEAM TO SEAM (W/O COLLAR)	1/8	/	1/4	/	1/8
		/	1/8	1/8	1/8	
H	SLEEVE LENGTH FROM SHOULDER	-1/8	/	-1/8	/	1/8
		/	-1/8	-1/8	-1/4	
I	STRAIGHT ARMHOLE	1/4	1/8	/	/	1/8
		1/8	1/8	1/8	1/8	
J	SLEEVE OPINING	-1/8	/	/	/	1/8
		/	/	-1/8	/	
SHORT						
A	RELAXED 1/2 WAIST	3/8	1/8	1/4	/	1/4
		1/8	1/4	1/4	1/4	
B	STRETCHED 1/2 WAIST	/	/	/	/	1/4
		/	/	/	/	
C	FRONT RISE WAISTBAND INCLUDED	1/8	/	-1/8	-1/8	1/8
		/	-1/8	-1/8	1/8	
D	BACK RISE WAISTBAND INCLUDED	/	/	-1/8	-1/4	1/8
		-1/8	-1/8	/	1/8	



E	INSEAM TO CROTCH	/	/	-1/4	-1/8	N/A
		1/8	1/8	/	1/4	
F	LEG OPENING	1/4	/	/	1/4	1/4
		/	1/8	1/8	1/4	
G	WAISTBAND HEIGHT	1/8	/	/	/	N/A
		/	1/8	/	1/8	
H	UPPER THIGH WIDTH	1/4	1/4	1/8	1/4	1/4
		/	3/8	1/4	1/4	
<b>* MEASUREMENTS ON FINISHED GARMENT*</b>		<b>7/8</b>				<b>TOL +/-</b>
<b>TEE SHIRT</b>						
	<b>COLOR</b>	<b>BLUE</b>	<b>BLACK</b>	<b>GREY</b>	<b>NAVY</b>	
A	LENGTH FROM HPS TO BOTTOM	1/8	/	1/8	/	1/4
		-1/8	-1/8	/	/	
B	CROSS SHOULDERS	1/4	1/2	1/4	3/8	1/2
		1/2	1/4	1/4	1/4	
C	CROSS CHEST 1" DOWN FORM AH	/	1/8	/	/	1/4
		1/8	/	/	/	
D	BOTTOM WIDTH	/	1/8	1/8	1/4	1/4
		1/8	1/8	/	1/4	
E	FRONT NECK DROP (HPS TO SEAM)	/	1/8	1/8	1/8	1/4
		1/8	/	/	1/8	
F	FBACK NECK DROP (HPS TO SEAM)	1/4	3/8	1/4	1/4	N/A
		1/4	1/4	1/4	1/4	
G	NECK WIDTH SEAM TO SEAM (W/O COLLAR)	1/4	/	1/8	/	1/8
		1/8	1/8	1/8	1/4	
H	SLEEVE LENGTH FROM SHOULDER	-1/8	/	/	/	1/8
		/	-1/4	1/8	-1/8	
I	STRAIGHT ARMHOLE	/	1/8	1/8	1/8	1/8
		1/8	1/8	/	1/8	
J	SLEEVE OPINING	/	/	/	/	1/8
		/	/	1/8	1/8	
<b>SHORT</b>						
A	RELAXED 1/2 WAIST	/	1/4	1/8	1/8	1/4
		1/4	1/4	1/4	1/8	

B	STRETCHED 1/2 WAIST	/	/	/	/	1/4
		/	/	/	/	
C	FRONT RISE WAISTBAND INCLUDED	-1/8	-1/8	1/8	1/8	1/8
		/	/	-1/8	/	
D	BACK RISE WAISTBAND INCLUDED	/	-1/8	/	-1/8	1/8
		1/8	/	1/8	/	
E	INSEAM TO CROTCH	/	1/4	/	1/4	N/A
		1/8	1/8	1/8	-1/8	
F	LEG OPENING	/	1/8	1/4	1/8	1/4
		1/8	1/8	1/8	1/4	
G	WAISTBAND HEIGHT	/	/	/	/	N/A
		/	/	1/8	/	
H	UPPER THIGH WIDTH	1/4	3/8	1/4	1/4	1/4
		1/4	1/4	1/8	1/8	
<b>* MEASUREMENTS ON FINISHED GARMENT*</b>		<b>10/12</b>				<b>TOL +/-</b>
<b>TEE SHIRT</b>						
	<b>COLOR</b>	<b>BLUE</b>	<b>BLACK</b>	<b>GREY</b>	<b>NAVY</b>	
A	LENGTH FROM HPS TO BOTTOM	-1/8	/	/	-1/8	1/4
		/	1/8	1/8	/	
B	CROSS SHOULDERS	1/4	1/4	1/2	1/4	1/2
		1/4	3/8	1/4	1/4	
C	CROSS CHEST 1" DOWN FORM AH	/	1/8	1/8	/	1/4
		1/8	-1/8	/	/	
D	BOTTOM WIDTH	/	/	/	1/4	1/4
		1/8	1/8	1/8	1/4	
E	FRONT NECK DROP (HPS TO SEAM)	/	/	1/4	1/8	1/4
		1/8	1/8	/	1/4	
F	FBACK NECK DROP (HPS TO SEAM)	/	3/8	3/8	1/4	N/A
		1/4	1/4	1/4	3/8	
G	NECK WIDTH SEAM TO SEAM (W/O COLLAR)	/	1/8	1/4	1/8	1/8
		1/8	1/8	1/8	1/8	
H	SLEEVE LENGTH FROM SHOULDER	-1/8	-1/8	/	/	1/8
		-1/8	/	-1/8	-1/4	
I	STRAIGHT ARMHOLE	/	/	1/8	1/8	1/8



		1/8	1/8	1/8	1/8	
J	SLEEVE OPINING	/	/	1/8	/	1/8
		1/8	1/8	/	/	
<b>SHORT</b>						
A	RELAXED 1/2 WAIST	1/4	1/8	1/4	1/8	1/4
		3/8	1/4	1/4	1/4	
B	STRETCHED 1/2 WAIST	/	/	/	/	1/4
		/	/	/	/	
C	FRONT RISE WAISTBAND INCLUDED	/	-1/8	-1/8	/	1/8
		-1/8	-1/4	/	/	
D	BACK RISE WAISTBAND INCLUDED	-1/8	/	-1/4	-1/8	1/8
		/	1/8	1/8	-1/8	
E	INSEAM TO CROTCH	/	/	1/8	/	N/A
		1/8	1/8	/	1/4	
F	LEG OPENING	1/4	1/8	1/8	1/8	1/4
		1/8	1/8	/	1/8	
G	WAISTBAND HEIGHT	/	/	/	1/8	N/A
		1/8	1/8	/	/	
H	UPPER THIGH WIDTH	1/4	1/4	1/8	1/8	1/4
		/	/	1/4	1/8	
<b>* MEASUREMENTS ON FINISHED GARMENT*</b>		<b>14/16</b>				<b>TOL +/-</b>
<b>TEE SHIRT</b>						
	<b>COLOR</b>	<b>BLUE</b>	<b>BLACK</b>	<b>GREY</b>	<b>NAVY</b>	
A	LENGTH FROM HPS TO BOTTOM	/	/	/	-1/8	1/4
		-1/8	-1/8	1/8	/	
B	CROSS SHOULDERS	1/4	1/4	1/4	1/4	1/2
		1/2	3/8	3/8	3/8	
C	CROSS CHEST 1" DOWN FORM AH	/	/	/	/	1/4
		/	/	1/8	1/8	
D	BOTTOM WIDTH	1/8	/	/	/	1/4
		/	1/8	1/8	1/4	
E	FRONT NECK DROP (HPS TO SEAM)	1/8	1/8	/	1/8	1/4
		1/8	1/8	1/4	1/8	
F	FBACK NECK DROP (HPS TO SEAM)	3/8	1/4	1/4	1/4	N/A

		1/4	3/8	3/8	1/4	
G	NECK WIDTH SEAM TO SEAM (W/O COLLAR)	/	/	1/8	1/8	1/8
		1/8	1/8	1/8	/	
H	SLEEVE LENGTH FROM SHOULDER	-1/8	/	/	-1/8	1/8
		/	-1/8	-1/4	/	
I	STRAIGHT ARMHOLE	1/8	/	1/8	1/8	1/8
		/	1/4	1/8	/	
J	SLEEVE OPINING	1/8	/	/	/	1/8
		/	/	1/8	1/8	
SHORT						
A	RELAXED 1/2 WAIST	1/4	1/4	1/8	1/4	1/4
		1/8	1/4	1/4	1/4	
B	STRETCHED 1/2 WAIST	/	/	/	/	1/4
		/	/	/	/	
C	FRONT RISE WAISTBAND INCLUDED	-1/8	/	/	/	1/8
		/	-1/8	-1/8	1/8	
D	BACK RISE WAISTBAND INCLUDED	/	/	-1/8	1/8	1/8
		1/8	/	-1/8	/	
E	INSEAM TO CROTCH	/	1/8	-1/4	-1/8	N/A
		1/8	/	/	/	
F	LEG OPENING	1/8	1/4	1/8	1/4	1/4
		1/8	1/8	1/8	1/8	
G	WAISTBAND HEIGHT	/	/	/	1/8	N/A
		/	1/8	1/8	/	
H	UPPER THIGH WIDTH	1/8	1/4	3/8	1/4	1/4
		1/4	1/4	/	/	





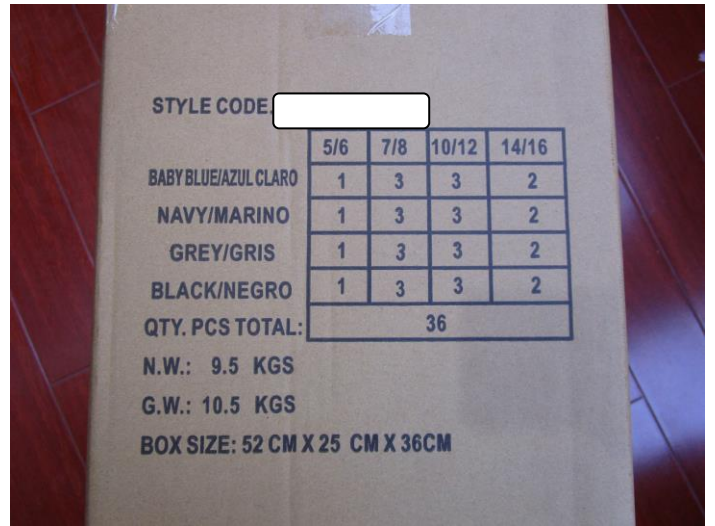
**5. SHIPPING MARKS/PACKING AND PACKAGING**

<p>Expected</p>	<ul style="list-style-type: none"> <li>● Shipping marks/Inner packing/Instruction book must according to client's specifications, and clear printing.</li> <li>● Moisture content requirement: Plywood less than 20%; Carton less than 15%</li> <li>● All packing materials are not allowed to damaged, such as unglued, holes etc.</li> <li>● The carton must be thick enough to hold the products.</li> <li>● The carton size must suitable, there is proper clearance between outer carton, inner carton and products.</li> </ul>	<p>Actual finding</p>	<p><input checked="" type="checkbox"/> <b>OK</b></p> <p><input type="checkbox"/> <b>Not OK</b></p> <p><input type="checkbox"/> <b>Pending</b></p>
-----------------	--	-----------------------	---

**Inspector comments:** /



Main Shipping mark (2 side)



Side Shipping mark (2 side)



Carton size



Carton size: 51.5x26x35.5 cm



Carton weight



Carton weight

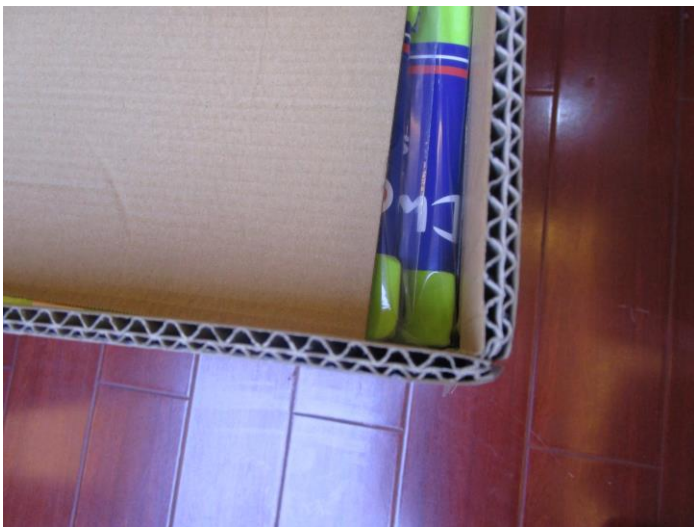




Carton view



Carton sealed by glue



5 layer's carton



Opened



36 pcs/ 4 colors/ carton

/

/



Inner packing

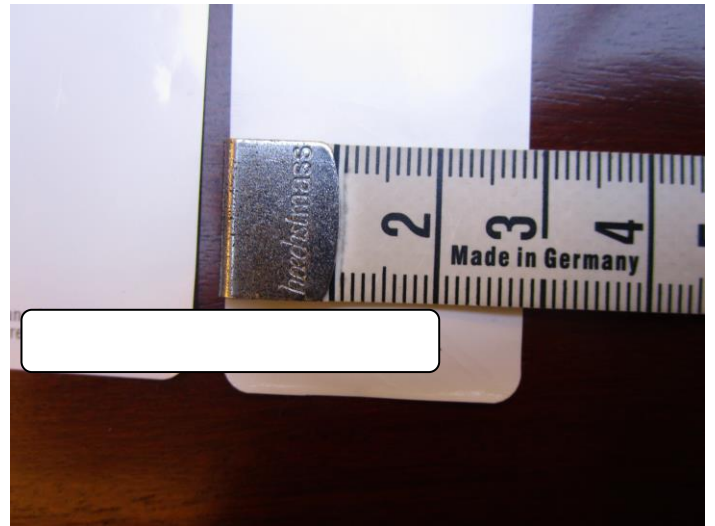


Inner packing













**6. TESTS AND SPECIAL REQUIREMENTS**

Test description	Inspector comments	Result
<p><b>Carton assortment check</b> - the actual quantity packed (for each color and size) must conform to packing list and shipping mark.</p> <p><b>--Check 3 cartons per item</b></p>	<p>N/A</p>	<p><b>Passed</b></p>



/

**Needle Damage & Seam strength check** - Pull the seams by hand using force (70N for 10s) to check:

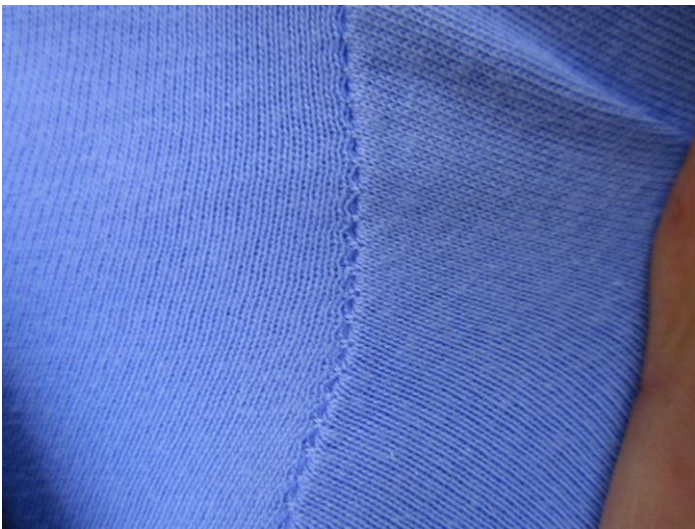
1. The needle holes or any needle damage.
2. The strength of seam.

Check at least 3 areas on a sample. Inspector's thumbs have to be close to the seam line and should have a round movement with hands in order to show the stitches correctly.

**--Sample size S2**

N/A

**Passed**



**Symmetry check** - check if the sleeves, collar, shoulders, pocket design are symmetric- measure the dimensional deviation if found twist and any asymmetric.

**--Sample size S2**

N/A

**Passed**





**Color shading check** – put the inspected pieces next to each other; Identify the deviation in color from one sample to the other; Check the color shading against the approved sample or production sample. The deviation should be within the acceptable range as per the specifications, if there is no specification available, use grey scale 2 as the acceptable limit.

**--Sample size: Minimum check 4 pairs/ color.**

N/A

Passed







**Sticker test** – Detach/stick thrice the sticker of a garment to see if the sticker still functionally. --**Sample size 5 Pcs**

N/A

**Passed**



**Stretch test (for elastic and knitted fabric)**- Stretch the garment on the waistband, side seam or other elastic band to check the elasticity of the garment.  
Expect result: No elastic fibers or stitches broken.  
--**Sample size S2**

N/A

**Passed**



/
---

**Fatigue test for Velcro/Snap/Zipper/Eyelet** - if applicable, 20 times - Pull and use the parts, they shall be resistant.  
**--Sample size 20 Pcs**

N/A	N/A
-----	-----

/

**Adhesive test** -For all marks, printing and logos found-the printing, marking & logos easily peel off. For example: one surface of hardwares, heat transfer label, printing care label, etc.  
**--Sample size 5 Pcs**

N/A	Passed
-----	--------







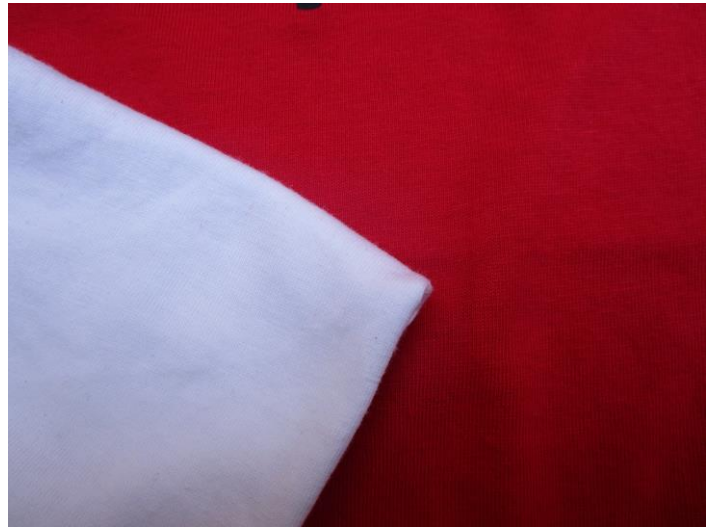
**Rub test** –to check the color fastness of the fabric. (including the lining) and all the accessories (Labels must be rubbed for this test). Use a white cotton cloth to rub the material. Rub the item 10 times over a 10 cm distance with a force of 9N (1kg). Test 1 piece per color with both a dry and a wet cloth. Expected result: There should be no color transfer greater than 4 on a grey scale (between the original white cloth and the colored one) after the dry test. There should be no color transfer greater than 3-4 on a grey scale (between the original white cloth and the colored one) after the wet test.

**--Sample size 5 Pcs**

N/A

**Passed**





/

**Per inch stitches check** –check the number of stitches on the buttons holes - Check if factory used lock stitches machine to attach button on the garments.  
**--Sample size 5 Pcs**

N/A

**Passed**



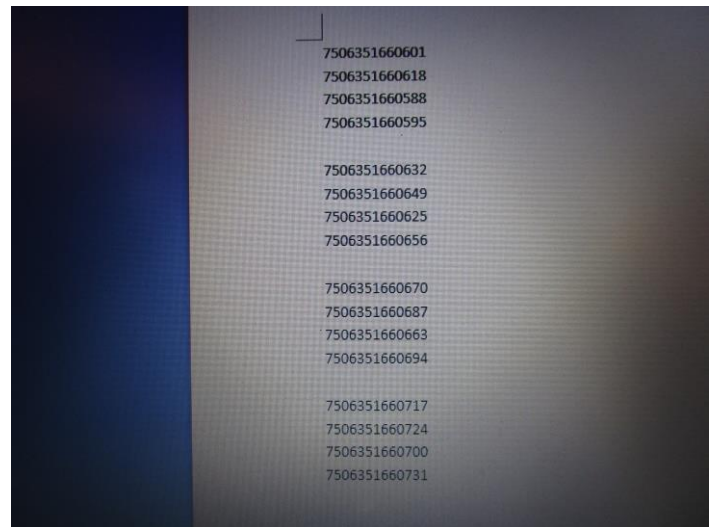
**Barcode scan test** – Use barcode scanner and PC if possible.

The barcode on care label is unreadable by scanner, but readable by mobile phone.

**Failed**

1. The barcode number must same as specification.
2. Scan the barcode, the barcode must readable, and the scan result must same as printed number.


--Sample size S2






**7. WORKMANSHIP DEFECTIVES LIST**

**Pleat----MAJ**

CRI	MAJ	MIN	Defectives Description	
0	1	0		/
				

**UPC missing----MAJ**

CRI	MAJ	MIN	Defectives Description	
0	1	0		/
				

**Untrimmed thread > 1cm----MAJ**

CRI	MAJ	MIN	Defectives Description	
0	6	0		/





**Untrimmed thread <1cm----MIN**

CRI	MAJ	MIN	Defectives Description
0	0	4	/





**Deflect stitch----MIN**

CRI	MAJ	MIN	Defectives Description	
0	0	1		/



**Unmatched seam----MIN**

CRI	MAJ	MIN	Defectives Description	
0	0	2		/





**Poor sewing on label----MIN**

CRI	MAJ	MIN	Defectives Description
0	0	2	/



**Stain----MIN**

CRI	MAJ	MIN	Defectives Description
0	0	1	/





**Untrimmed material----MIN**

CRI	MAJ	MIN	Defectives Description
0	0	1	/



/

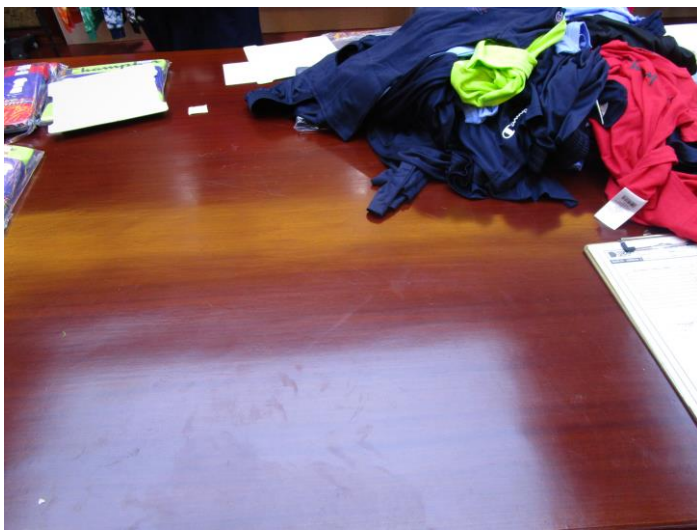
**ADDITIONAL PICTURES**



305 214 115 325 ~~335~~  
 219 138 194 76 290  
 336 210 246 147 381  
 200 250 184 8 348  
 Total 20CTNS.

Selected cartons for check quality

Number of selected carton



Inspection place view



Factory view

Care label cut for MAJ defectives



Workshop view



**Draft report**

**NBN Inspection**

NBN Inspection No.:		Client Name:	
Inspection Date:		Products:	pt
Inspector Name (s):		PO#:	
Factory Name:		Ref#:	

**Important Remarks:** (Please remark all not OK findings and failed test here)

N/A

**Defective List:**

Defect Description	Critical	Major	Minor
pleat - MAJ	0	1	0
Upc missing - MAJ	0	1	0
Unrimmed thread > 1cm IT- MAJ	0	6	0
poor Sewing T MW	0	0	2
Stain - MW	0	0	1
Reflect Sewing - MW	0	0	1
Unmatched Seam T MW	0	0	2
Unrimmed thread < 1cm IT- MW	0	0	4
Unrimmed material - MW	0	0	1
<b>Total Found</b>	0	8	11
<b>Samples inspected</b>	500	500	500

Inspector(s) arrival time at the factory: 04:40 am/pm	Inspection started at:
Inspector(s) lunch time: from ___ pm to ___ pm	Inspection ended at:
Inspector(s) departure time: 12:30 pm	

**Important note:** This draft report only represents all or part of the defects and quality status of products found by inspector at the inspection site, for reference only. The final result shall be subject to the formal inspection report.  
 注意事项: 此手写报告仅代表检验员在检验现场发现的所有或部分产品缺陷及质量状况, 仅供参考。最终结果以正式检验报告为准。

Name of Factory Representative: 工厂代表姓名: Signature: [Signature Box] 签名:	Name of Inspector(s):
---	-----------------------

**IMPORTANT NOTES**

1. This report reflects our findings at the time and the place of inspection based on random samples selected.
2. This inspection was carried out the best of our knowledge and abilities, and our responsibility is limited to the exercise of reasonable one.
3. This report does not relieve the sellers from their contractual obligations nor does it prejudice buyer's right for compensation for any apparent and/or hidden defects not detected during our inspection or occurring thereafter.
4. This report does not evidence shipment.

**End of the Report**